



# TC Series

## Thermal Sectional Doors

With a proven track record for thermal efficiency and extreme durability, Raynor TC Series is simply the best you can specify. With extruded polystyrene insulation thermally bonded between two steel skins, TC 300/320 doors have an exceptional R-value of 17.05, with TC200 doors featuring a 10.25 R-value.



### TC200

TC200's two-sided steel design features a laminated core of expanded polystyrene insulation for an R-value of 10.25. TC200 is offered with a number of exterior color selections and optional windows to meet your application's needs.



### TC300

The industry's benchmark for commercial sectional garage doors, the TC300 provides unparalleled Raynor reliability and stability to meet or exceed the requirements of daily use. Raynor TC300 is offered with the widest selection of quality features and options for the most common product applications requiring strength, reliable operation and maximum thermal efficiency.



### TC320

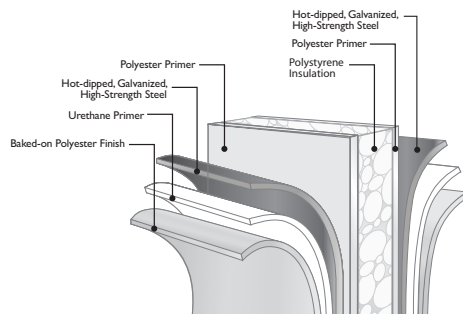
Designed for optimum strength and performance, the TC300's 20-gauge exterior steel skin and rugged hardware provides the ultimate in dependability. Raynor TC320 is ideal in applications where security and thermal protection are required.

# TC Series

## TC200

TC200's two-sided steel design features a laminated core of expanded polystyrene insulation for an R-value of 10.25. TC200 is offered with a number of exterior color selections and optional windows to meet your application's needs.

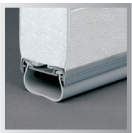
2" thick door sections are made from high-strength, impact-resistant steel with a thermal core of polystyrene insulation for a 10.25 R-value



TC200, White with Colonial Windows

## Features

Raynor TC200 doors are available with numerous features and options, including those listed below.



### Weatherseal

Bottom weatherseal keeps out the elements.



### Section Joints

Vinyl thermal break between interior and exterior skins, along with a section joint seal prevent weather infiltration.



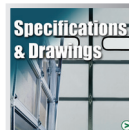
### Hardware

TC200 has heavy-duty, hot-dipped galvanized steel sections with an epoxy primer and baked-on polyester finish to resist rust and impact. The rugged, hot-dipped galvanized steel track and steel wheel, ball-bearing rollers assure durable, long lasting performance.



### Windows

TC200 windows use 1/8" DSB, insulated glass and are available in several options: 24"x8", 24"x12", 34"x16" colonial, ranch, full view colonial style aluminum section, and full view ranch style aluminum section.



### Specifications & Drawings

Visit us at [www.raynor.com](http://www.raynor.com) for CSI Master Format™ Specifications, Raynor Quick Specs and Standard Drawings.

### Finished Interior

Two-sided sandwich construction provides TC doors with an attractive and durable white finished steel interior.



# TC Series

## Feature Guide

Model	Max. Opening Width	Max. Opening Height	Construction	Surface Texture	Section Thickness	Exterior/Interior Steel Thickness	End Stile Steel Thickness	Insulation (R-Value)	Thermal Break	Exterior Colors	Section Limited Warranty <sup>†</sup>
TC320	40'	32'	Steel Sandwich	Smooth	3"	20-Gauge/ 25-Gauge	14-Gauge	Extruded Polystyrene (17.05)	Yes	White & 187 ArmorBrite Colors	10-Years Rust-through and Delamination
TC300	40'	32'	Steel Sandwich	Stucco	3"	25-Gauge/ 25-Gauge	14-Gauge	Extruded Polystyrene (17.05)	Yes	White, FrostWhite*, Dark Brown*, Sepia*, Beige* & 187 ArmorBrite Colors	10-Years Rust-through and Delamination
TC200	18'	16'	Steel Sandwich	Stucco	2"	26-Gauge/ 26-Gauge	18-Gauge	Expanded Polystyrene (10.25)	Yes	White, Almond, ClayTone, BronzeTone, Desert Tan, Brown*, Sepia*, Frost White*, Beige*, OptiFinish™ & 187 ArmorBrite Colors	10-Years Rust-through and Delamination

\*Features the Kynar™ paint process, which provides extended UV protection against fading.

**\*LIMITED WARRANTY:** TC Series door sections carry an exclusive 10-year delamination warranty (of the steel door skins from the insulation) and 10-year limited warranty against rust-through on all other door components. See your local Raynor Authorized Dealer for complete details.

## Colors

All TC Series doors are available with optional ArmorBrite™ powder coat finish in 187 colors.

### Colors available on TC200 doors



### Colors available on TC200 and TC300 doors



\*Features the Kynar™ paint process that provides extended UV protection against fading.

### Colors available on TC320



## Application Guide

	TC320	TC300	TC200
Agricultural Buildings	●	●	●
Cafeteria/Concessions	○	○	●
Car Wash/Corrosive Environments	○	○	○
Commercial/Multi-Tenant	○	●	○
Fire Station/Ambulance	●	●	●
High Security	●	○	○
Large Opening Size	○	●	○
Mining, Pulp & Paper	○	●	○
Service Station	●	●	●
Shopping Mall/Retail	●	●	○
Thermal Environments	●	●	●
Transit Facility/Truck Terminal	●	●	●
Underground Parking	○	●	○
Non-insulated Storage	○	●	○
Warehouse/Manufacturing	●	●	●

● Best ○ Good ○ Applicable

## Special Sizes

### Large Opening Sizes

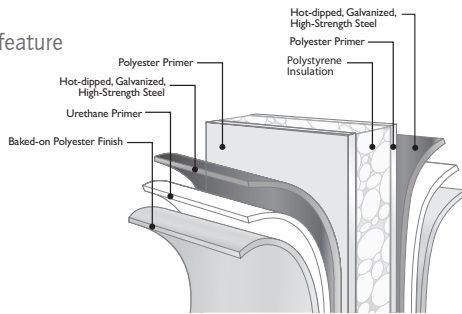
Because Raynor TC Series doors are so durable, we offer this product in a variety of sizes to accommodate large opening applications. For further information, contact your Raynor Authorized Dealer.



# TC300

The industry's benchmark for commercial sectional garage doors, this product provides unparalleled Raynor reliability and stability to meet or exceed the requirements of daily use. Raynor TC300 is offered with the widest selection of quality features and options for the most common product applications requiring strength, reliable operation and maximum thermal efficiency.

TC320 and TC300 doors feature extruded polystyrene insulation thermally bonded between two hot-dipped galvanized, rust-resistant steel skins.



# TC320

Designed for optimum strength and performance, this door's 20-gauge exterior steel skin and rugged hardware provides the ultimate in dependability. Raynor TC320 is ideal in applications where security and thermal protection are required.



TC300, White with Rectangle Windows

## Features

Every Raynor TC320 and TC300 door is built for superior performance and includes the features listed below.



### Optimum Energy Savings

Flexible, EPDM rubber flap header seal reduces air infiltration and energy costs by sealing the top of the door against the header.



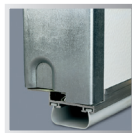
### Maximum Thermal Efficiency

3" thick TC320 and TC300 door sections are fully insulated with extruded polystyrene insulation and an R-value of 17.05.



### Reduced Airflow

Our dual bulb seals prevent airflow between sections. Our patented RollLock™ mechanically interlocked thermal barrier prevents heat loss and eliminates any metal-to-metal contact.



### Decreased Energy Costs

TC320 and TC300 doors help you reduce energy costs with a U-shaped, vinyl bottom weatherseal.



### Rugged Hardware and Springs

Your TC320 or TC300 door comes packaged with the right combination of long-lasting hardware, track and springs to precisely match your door's size and application.

## TC300/TC320 Options and Upgrades



### Choice of Windows

TC320 and TC300 windows are available in a variety of insulated glass styles and several options. 24"x4", 24"x8", 24"x12", full view aluminum, or standard full view in 34"x16" sizes.



### High-Cycle Counterbalance Systems

For reliable operation in high traffic areas, choose high-cycle torsion springs with 25,000; 50,000 or 100,000-cycle life. For reduced maintenance and ultra-smooth operation in heavy-use applications, choose a weight counterbalance system.



TC320, Red Powder Coat with Rectangle Windows



**Jamb Seal**

Helps to decrease energy costs and reduce air infiltration by sealing the side of the door when closed.



**Locks**

In applications where control and access are important, choose from a variety of locking options to help keep your building secure.\* Locks come in both inside and outside variations.



**Customized Track and Hardware Systems**

Track systems are supplied to fit special clearances, inclines or contour applications. Hardware and track systems can be designed to fit any need.\* Additional trussing is available for special wind loading applications.



**Pedestrian Door**

Pedestrian doors are designed for convenient entry and to help minimize energy loss.\*



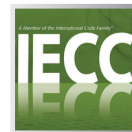
**Removable Center Posts**

Carry-away and swing-up options are available for extra-wide openings. Ideal for agricultural or airplane hangar applications.



**Carbon Monoxide Vent**

Allows you to channel fumes to the outside when door is closed. Available in a variety of sizes.



**IECC Requirements Package**

The International Energy Conservation Code (IECC) requires building components to meet minimum U-factor and Air Infiltration rates. This option will ensure the TC320 and TC300 will exceed the latest IECC standards by using the required header and jamb seals and track mounting. Windows, exhaust ports and pass doors cannot be used. Raynor's IECC package yield the following results:

Model	U-Factor	Air infiltration at 25mph
TC320	0.19	0.19 cfm/ft <sup>2</sup>
TC300	0.19	0.19 cfm/ft <sup>2</sup>

*\*Some options may be limited to door size or model. Contact your local Raynor Authorized Dealer regarding availability for your applications.*

## Commercial Operators

Raynor ControlHoist™ (with solid state logic board control) and PowerHoist™ operators are available in a variety of motor, voltage, and phase combinations for any commercial or industrial application. Contact your local Raynor Authorized Dealer to select the operator and accessories that are suited for your door's size and usage.



ControlHoist



PowerHoist



3 Button Transmitter

## Raynor Door Options

Raynor also offers a full line of sectional, rolling, fire, high performance and traffic doors, as well as, security grilles. See your Raynor Dealer or visit [www.raynor.com](http://www.raynor.com) for more information.



TC Series, TC300



RapidCoil, RC300



DuraShutter

# Professional Installation and Service

## Depend on your Raynor Dealer

When you select Raynor, you're not just getting a superior garage door - you're also getting professional garage door installation and service expertise.

Every Raynor garage door is installed by a trained Raynor professional. And that means added benefits for you. First, you won't have to deal with it yourself. And because it's done right the first time, your door will deliver performance and reliability from the day it's installed. Your technician will check your door for everything from safety to performance to appearance. Trust your Raynor garage door to someone who knows it better than anyone else, your professional Raynor Dealer.



P.O. Box 448, 1101 East River Rd.  
Dixon, IL 61021-0448  
1-800-4-RAYNOR (472-9667)



### A.B.E. Doors & Windows

6776 Hamilton Boulevard  
Allentown, PA 18106  
610-398-2430

[www.abeddoors.com](http://www.abeddoors.com)

**Call 610-398-2430 now to get a free estimate!**