

HIGH-SPEED, HIGH-CYCLE

Extreme®

1024 PERFORMANCE DOORS

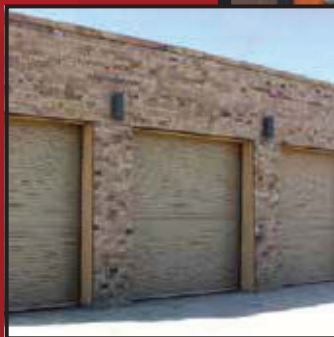
MODEL EPD1024 & EPI1024

Extreme® Performance 1024 high-speed, high-cycle doors provide a proven combination of steel door security, minimal maintenance requirements and exceptional cycle life unmatched by other performance doors.

Extreme Performance 1024 doors are tested to perform for over a million cycles at an opening speed of up to 24" per second - **three times faster than standard coiling or overhead sectional doors.**

Designed to maximize your return on investment, **the 1024 door provides the lowest lifetime cost and lowest cost-per-cycle versus other high-speed slatted products.** And, its cost-per-cycle savings dramatically increase when compared to standard coiling doors that may be mistakenly considered for high-cycle openings.

Durability, environmental separation qualities and ease of repair after impact makes 1024 doors the superior choice for high-use openings.



BENEFITS

- + Increased productivity at high traffic openings
- + Improved security and prevent unwanted entry at sensitive openings
- + Maximize energy savings by quickly sealing your building
- + Fully operational under wind loads up to 10 PSF
- + Durable and sustainable design: 1,000,000 cycles, 5 year warranty

APPLICATIONS

- + Distribution
- + Government
- + Manufacturing
- + Parking
- + Transportation
- + Secure Entry/High Security

CORNELL
Innovative door solutions.™

Extreme® PERFORMANCE

Hood: Protective square sheet metal enclosure for the curtain provides weather resistance at the head of the door and helps maintain alignment

Material & Finish: Stainless steel 300 series #4 finish or galvanized steel with powder coat finish in gray, tan or white

REDUCE MAINTENANCE & REPLACEMENT COSTS

Springless Shaft: Steel pipe not less than 6 5/8" diameter. Springless design reduces maintenance requirements and facilitates cycle capacity.

Standard Material: Steel

QUICK & EASY INSTALLATION

Brackets/Coil Box Assembly: Steel plate brackets are part of the unitized coil box assembly with the curtain and barrel. Access hatch for ease of servicing. Both drive and tension brackets furnished with precision ball bearings.

Standard Material & Finish: Steel with dark bronze powder coat finish

CONTINUOUS DUTY DESIGN

Operation: Sprocket and chain driven motor operation standard. Doors operate by rotating the shaft gear end. Auxiliary hand chain included as standard.

MINIMIZE WEAR & TEAR ON CURTAIN

Guides: Sealing, self-lubricating UHMW anti-wear strips provided to greatly reduce friction and curtain wear. 1024 Doors are built to withstand up to 20 PSF maximum wind load and are operational up to 10 PSF maximum wind load. Consult factory for higher wind load availability.

Standard Material & Finish: Steel angles with powder coat finish in gray, tan or white

MINIMIZE AIR INFILTRATION

Perimeter Sealing: Guides furnished with double brush weather strip for sealing and reduced wear. Wireless sensing edge astragal provides positive close at the floor. 1024 Insulated also furnished with lintel seal.

EXTEND CURTAIN LIFE

Bottom Bar: Two 2" x 2" x 3/16" back to back structural steel angles

Standard Material & Finish: Steel with powder coat finish in gray, tan or white

WEAR-RESISTANT, HIGH-CYCLE FINISH

Curtain: Interlocking roll formed slats with endlocks riveted to ends of alternate slats to maintain slat alignment and prevent wear

Standard Material & Finish: 18 ga. galvanized steel with rust-inhibiting CycleShield™ powder coat finish in gray, tan or white. **Insulated Curtain (exterior/interior):** 22/22 ga. galvanized steel with rust-inhibiting CycleShield™ powder coat finish in gray, tan or white.

1024 DRIVE & CONTROL SYSTEM

Provided complete as standard:

+ **Motor:** UL listed, SEW Eurodrive TEFC variable speed motor with sprocket and chain drive horizontally mounted to unitized structure. High performance brake.



+ **Control Panel:** Wall mounted starter. PLC controller with variable frequency drive featuring soft-start and soft-stop at both ends of limit travel. NEMA 4 rated for harsh weather environments. 20" x 24" x 8"

STANDARD SAFETY FEATURES

+ **UL 325-2010 Compliant Photo Eye Sensors:** Interruption of the beam before the door fully closes causes the door to immediately stop downward travel and reverse direction to the fully open position

+ **SafetyGard™ Light Curtain Technology:** Built into the guide assembly and extending approximately over six feet high from the finished floor on both sides, traffic cannot travel through the opening without being detected. If the door is cycling and an object passes through the curtain beams, the door will automatically reverse to the open position.

OPTIONS

- + **Activation Devices:** Motion detector, induction loop, additional photo eyes
- + **Sensing Devices:** Presence sensor, additional photo eyes, wireless sensing edge
- + **"Warning to Close" Annunciators:** Strobe, beacon, horn
- + **Two-Door Interlocks**
- + **Long Distance Wiring**
- + **Vision Windows**
- + **Fenestrated Slats**

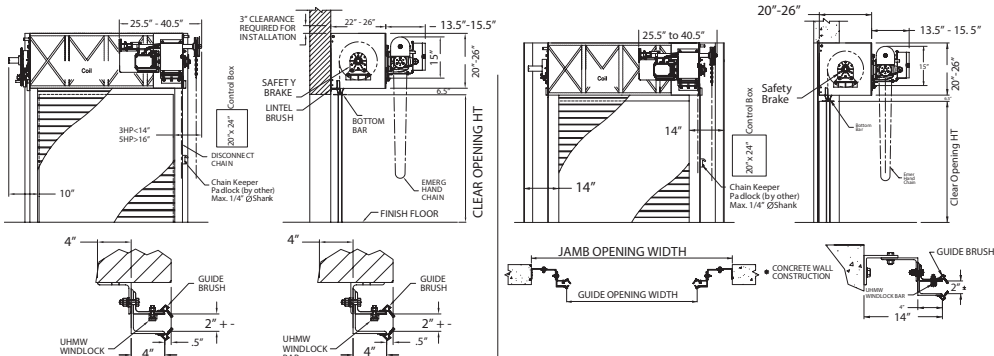
CYCLESIELD™ POWDER COAT FINISH

Cornell's CycleShield Powder Coat Finish provides a low coefficient of friction wear-resistance for added durability. Available in a choice of over 180 colors.

OPTIONAL FINISHES

- + Stainless steel, 300 series #4 finish
- + Hot-dip galvanizing on steel components
- + SpectraShield powder coat finish in selected color
- + Zinc Rich Gray corrosion resistant powder coating

MOUNTING & CLEARANCES



Face of Wall

Between Jamb

Standard construction Extreme 1024 Service and Insulated doors are built to order to fit specific opening dimensions to **max. 30' wide** or **max. 20' high**.



Cornell Iron Works, Inc.
 24 Elmwood Avenue, Mountain Top, PA 18707
 TEL 800.233.8366 • FAX 800.526.0841
 Architectural Design Support: Ext. 4551
Website: www.cornelliron.com
 Email: ADS@cornelliron.com

An ISO 9001:2008 Registered Company



Printed with Pride in the USA / 50% Recycled Paper